

**COMMITTEE OF THE WHOLE**  
**APRIL 12, 2022**  
**4:30 P.M.**  
**AGENDA**

---

1. Agenda Additions/Deletions
2. Agenda Approval
3. 4:35pm – Glenda Farnden - STARS 2022 Update 2-12
4. Surplus Paving Stones 13
5. Coast to Coast Tour – Funding Request 14-15
6. Stettler Agricultural Society – Legacy Project Funding Request 16-24
  - Development Permit (ongoing)
  - Trees on Ag Society Land (100 Spruce Trees, approximately \$20,000)
  - Trees on Town Land
  - Front Entrance Trees (Approximately \$15,000)
7. Additions
8. Adjournment



**CRITICAL CARE, ANYWHERE.**

**WE ARE ALL STARS®**

# #1 PRIORITY

## UNINTERRUPTED OPERATIONS

**STARS - Remains under strict protocols**

**Increasing stress-related types of missions**

**COVID-related cases**

- \* 1-in-5 STARS missions

**STARS Transport Physicians**

- \* Assist hospital personnel
- \* Provide critical care guidance
- \* Virtual consultations
- \* Airway management
- \* Ventilation and resuscitation procedures



# 24 / 7 SAFETY NETWORK

## Access to All Resources

- \* GIS mapping
- \* Pre-set coordinates

## STARS Transport Physicians

- \* Mechanism of injury / illness
- \* Appropriate level of response
- \* Medical oversight
  - All critical patients
  - All modes of transport
- \* 1-10 ratio STARS assistance

**Over 32,000 emergency requests received each year.**



# MINUTES COUNT!

## Transport Physicians

- \* Take a shift in the ELC
- \* Coordinate complex logistics
- \* Scheduling receiving hospitals
  - ✓ Neurosurgeons
  - ✓ Cardiac Cath Lab
  - ✓ CAT Scanner  
(prerequisite stroke patients)

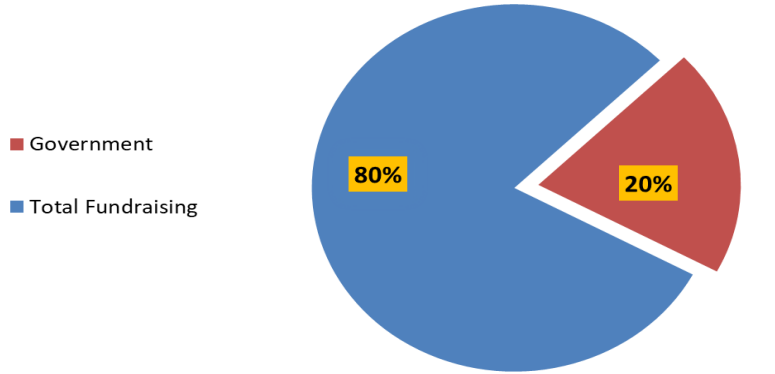
## Physicians Virtual Consultation

- \* Face-to-face decisions
- \* Transmit *real-time* diagnostics
- \* Direct delivery: critical/trauma patients to O.R.

**This is a Game-changer!**



## STARS Alberta Funding Fiscal 2021



### Funding in Thousands

AB Government Funding	\$	7,354
Total Operating Costs /Capital Expenditures**	\$	36,700
AB Government Funding as a Percent of Costs		20%

STARS Gross Fundraising	\$	7,321
AB Lottery	\$	10,358
Calendar	\$	381
Site Registration / Emergency Contact Centre	\$	3,077
Other Revenue	\$	664

\*\* Excludes capital expenditures for fleet renewal

## THINKING OUTSIDE THE BOX

### IDENTIFY EFFICIENCIES

- Operational and Fund-raising
- Downsized staff (affected areas)

### STARS LOTTERY “Single-Largest Funding Source”

- 2021 Lottery SOLD OUT!
- 2022 Lottery 2<sup>nd</sup> best lottery to-date

### STARS CALENDAR CAMPAIGN DECREASED

- Inability to travel
- Calendar sales at Municipal Offices across Alberta

### PIVOT TO SAFE ONLINE EVENTS

- Unforeseeable future for events
- Rural communities host online 50/50's & raffles
- New multi-Provincial Radiothons

### ALBERTA GOVERNMENT SUPPORT

- HEMS Review released
- RECENT Announcement for 50% funding for STARS

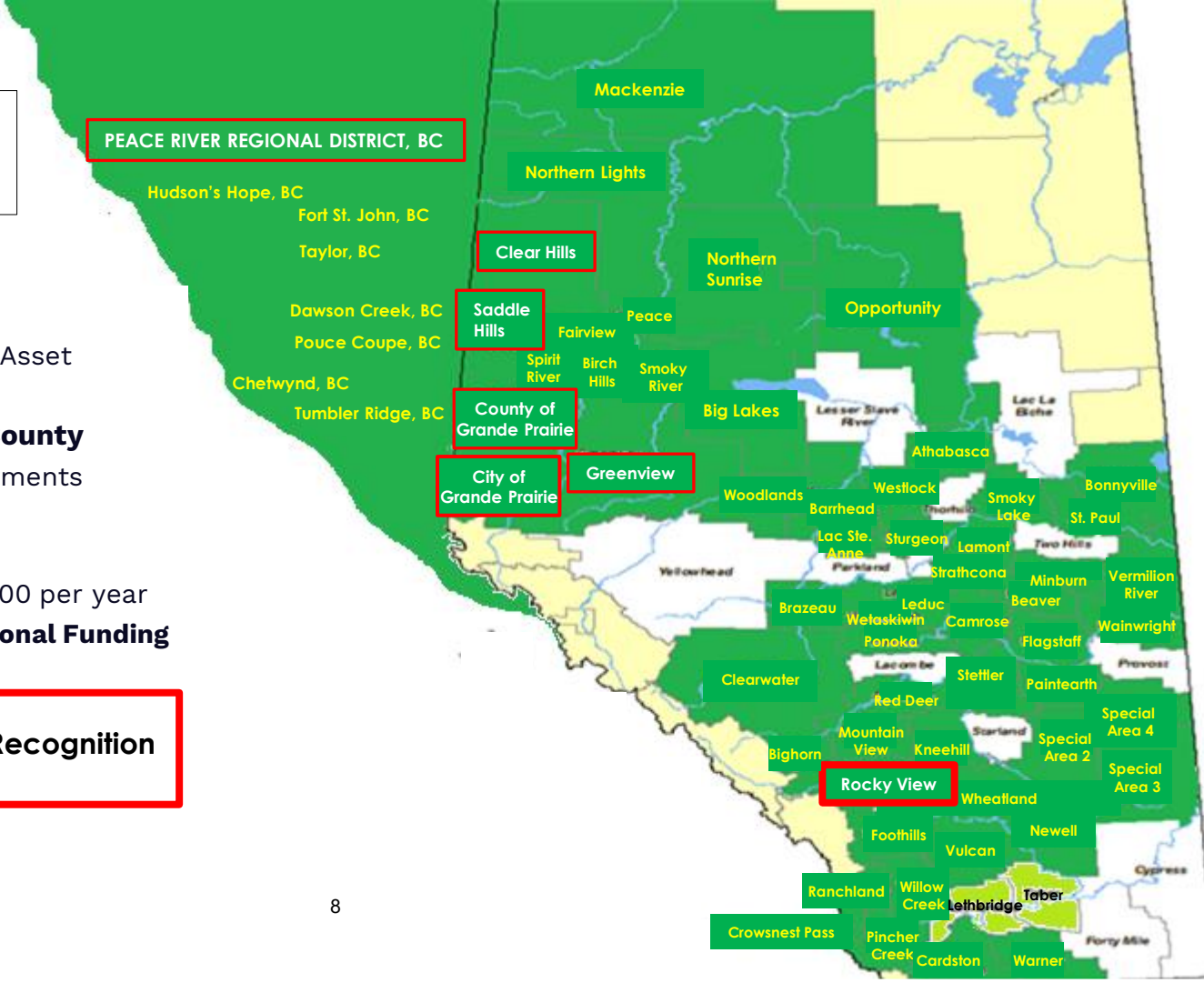
TOWN of STETTLER/ Stettler County @ March 31, 2022	2017	2018	2019	2020	2021	2022	TOTAL
Near <b>Alix</b> (within Stettler County)					1		1
Near <b>Bashaw</b> (within Stettler County)					1		1
Near <b>Big Valley</b>		1		1			2
Near <b>Byemoor</b>				1			1
Near <b>Donalda</b>						1	1
Near <b>Mirror</b> (within Stettler County)			1		1		2
<b>Town of Stettler Hospital</b> (critical inter-facility transfers)	3	9	9	13	16	2	52
<b>Town of Stettler</b> (scene calls)	7	5	2	3	1		18
<b>TOTAL</b> avg. 15 missions per year represents \$100K+ in service value for your residents and area	10	15	12	18	20	3	78



# MUNICIPALITIES SUPPORT STARS

- \* STARS – An Essential Service
- \* Emergency Protective Services Asset
- \* Regional Partnerships
- \* **Town of Stettler + Stettler County**
- \* Per Capita / Fixed-rate Commitments
- \* Urban - \$2 per capita
- \* Rural – up to \$90 per capita
- \* Standing Motion – up to \$210,000 per year
- \* **\$2M+/year Sustainable Operational Funding**

**7 Municipalities Receive Logo Recognition**





# A GENERATIONAL INVESTMENT

## \$138M Fleet Campaign

- \$65M Federal Government (5)
- \$13M Saskatchewan Govt. (1)
- \$13M Alberta Government (1)
- \$47M Corporate Business  
Dedicated Individuals  
Municipalities

## \$138M Finalizing Campaign

Final arrival: Edmonton/Grande Prairie

10<sup>th</sup> H145 – late summer arrival

Anticipate up to \$15M for BK117s

Re: Market value / USD at time of sale

**Fully H145 operational June 2022**



# H145 BREAKTHROUGH TECHNOLOGY

- \* Outperforms previous BK117
- \* Speed, range, fuel efficiency
- \* Powerful twin engines
- \* Advanced avionics
- \* Auto-pilot / Auto-hover
- \* Reduce pilot fatigue
- \* Superior safety features
- \* New 5-bladed system
- \* Increased lift/load capacity
- \* Benefits complex terrain
- \* Reduced Cost



## HIGHEST LEVEL OF CRITICAL CARE

- \* World-Class Expertise
- \* STARS ICU Flight Nurse
- \* STARS ALS Paramedic
- \* Transport Physician Oversight
- \* Cutting Edge Diagnostics
- \* Bluetooth / Integrated Wi-fi
- \* Satellite Connectivity
- \* Transmitted Test Results
- \* Virtual Enhancements
- \* **Critical Care - Anywhere**



**AIRBUS H145 - INTENSIVE CARE UNIT**

**WE ARE ALL STARS®**



STARS - Serving Albertans since 1985.  
More than 45,000 missions flown,  
No cost to the patient.

## **Thank You, Town of Stettler**

*Life-saving partners since 2019*

*Current Pledge of Support*

*\$2 per capita / Standing Motion*

*\* STARS as line-item in annual budget*

### **OUR REQUEST**

**\$12,000.00 per year**

*(fixed rate)*

**Standing Motion**

A life is saved every day.  
Partnerships make this possible.  
**You are STARS reason for being.**



# MEMORANDUM

Date: April 5, 2022

To: Greg Switenky  
CAO

From: Melissa Robbins  
Director of Operational Services

Re: Surplus Paving Stones

---

## **Background:**

When road reconstruction projects are completed downtown, paving stone sidewalks are replaced with poured in place concrete sidewalks. The Town salvages the paving stones and stores the excess at the shop yard. Traditionally, a small inventory is kept for maintenance and replacement needs in the downtown area and the surplus bricks are sold by tender in the town surplus equipment sale in accordance with Policy V-2 (b) Disposal of Surplus Equipment, Police Seizures and Lost & Found Items. We have not had a town sale for several years and currently have 18 pallets, approximately 1800 sq.ft, of used paving stones of varying color/shape.

## **Discussion:**

Recently the town has had two requests from volunteer/not for profit organizations for the recycled paving stones to be used for local projects at no cost. Historically the used paving stones have captured anywhere from \$75-200 per pallet (approximately 100 sq.ft/pallet), largely determined by the varying quality within each pallet.

Both requests are for small quantities of bricks, at approximately 300 sq.ft and 500 sq.ft. If Committee of the Whole supports these requests, Administration could provide paving stones to the groups/organizations at no charge. Alternatively, Administration can direct them to bid on the paving stones in the town sale that will be held in June 2022.

## **Recommendation:**

Administration is seeking Committee of the Whole direction regarding these requests as donations fall outside the current guidelines of the policy.

Option 1: Committee of the Whole mutually supports that Administration reasonably and fairly consider requests for the donation of surplus used paving stones, at no cost, to local volunteer community groups and not for profit organizations for the use and benefit in local projects.

Option 2: Committee of the Whole mutually supports that Administration include all used paving stones in the town sale and directs requesting volunteer community groups and not for profit organizations to bid accordingly.

5. **Delegations:**

- (a) 6:35 – Malcolm Fischer - Coast to Coast Vintage Car Tour – August 22-23, 2022 – Sponsorship Request

M. Fischer advised that the Coast-to-Coast Vintage Car Tour will be coming through Stettler in August of this year, these tours dating back to 1967. Each car dips front wheels in the Atlantic at St. Johns, NFLD and then about 40 days later, does likewise at Victoria, BC. This is an entourage of some 50 cars, most pulling small trailers, carrying about 125 people, from across Canada, who will visit our fair town Monday and Tuesday, August 22 and 23. Typically, when they visit Alberta towns, it is customary (as has been the case in places like Ponoka and Wetaskiwin in previous tours) for the town and local car clubs to host a bit of a reception and also one of the meals for participants. The car clubs involved will be the Central Alberta Vintage Auto Club and the Ponoka Piston Poppers. Tour participants talk long and loud of the places they have visited across the country, and often return with friends to those most liked.

No Stettler business will be asked for a nickel of sponsorship as it is well known to the Coasters representatives to, "Come and bring your wallets."

The Town committee discussions have taken a few productive turns and the latest have focused on this type of schedule thus far while these people are in Stettler:

- Arriving around lunch time on the Monday (of course, arrivals can be spread out over sometime)
- Camping spots have been booked at our town campground for both nights
- Having been directed to Alberta Prairie, they intend to finalize a full train ride and meal,
- Our discussions thus far have been that the Town host a reception – a wine and cheese type gathering – to be held at the campground. Arrangements have been made to borrow a large tent from the high school with zip-in walls in case of inclement weather. No town staff will be asked to do any of the set-up, etc.
- Discussions with the P&H Elevator Preservation Society are ongoing and may include a Tuesday morning tour and various demonstrations, and possibly a "coffee and pie" time afterward

- Other morning local tours will be arranged as deemed desirable by their representatives
- Board of Trade Executive Director Byron Geddes has suggested distributing a “goodie bag” for each participant with various discount coupons inside. It is hoped these might be used for their Tuesday lunch, with the afternoon deliberately left unplanned so they might visit Stettler’s great shopping venues.
- Hosted Tuesday supper: Ponoka Piston Poppers car club pig roast for participants, with Central Alberta Vintage Auto Club sponsoring potatoes, bean dishes, salads, etc.

prepared at the SRC by the Penalty Box. Current thinking is to have this event in the parking lot of the Community Hall with Growlers and Farmers’ Market easily accessed. Hoping to discuss using the Ag Society’s picnic tables, and asking to have the Community Hall washrooms available along with the hall itself in case of inclement weather. No kitchen use required, and hopefully, no tables and chairs needed either. If so, set-up and tear-down to be done by car club volunteers.

The request to the Town of Stettler/Board of Trade would be:

- sponsoring the wine and cheese for the welcome reception Monday evening, and
- donation of the Community Hall bathrooms access, and hall itself for dining if weather is inclement.

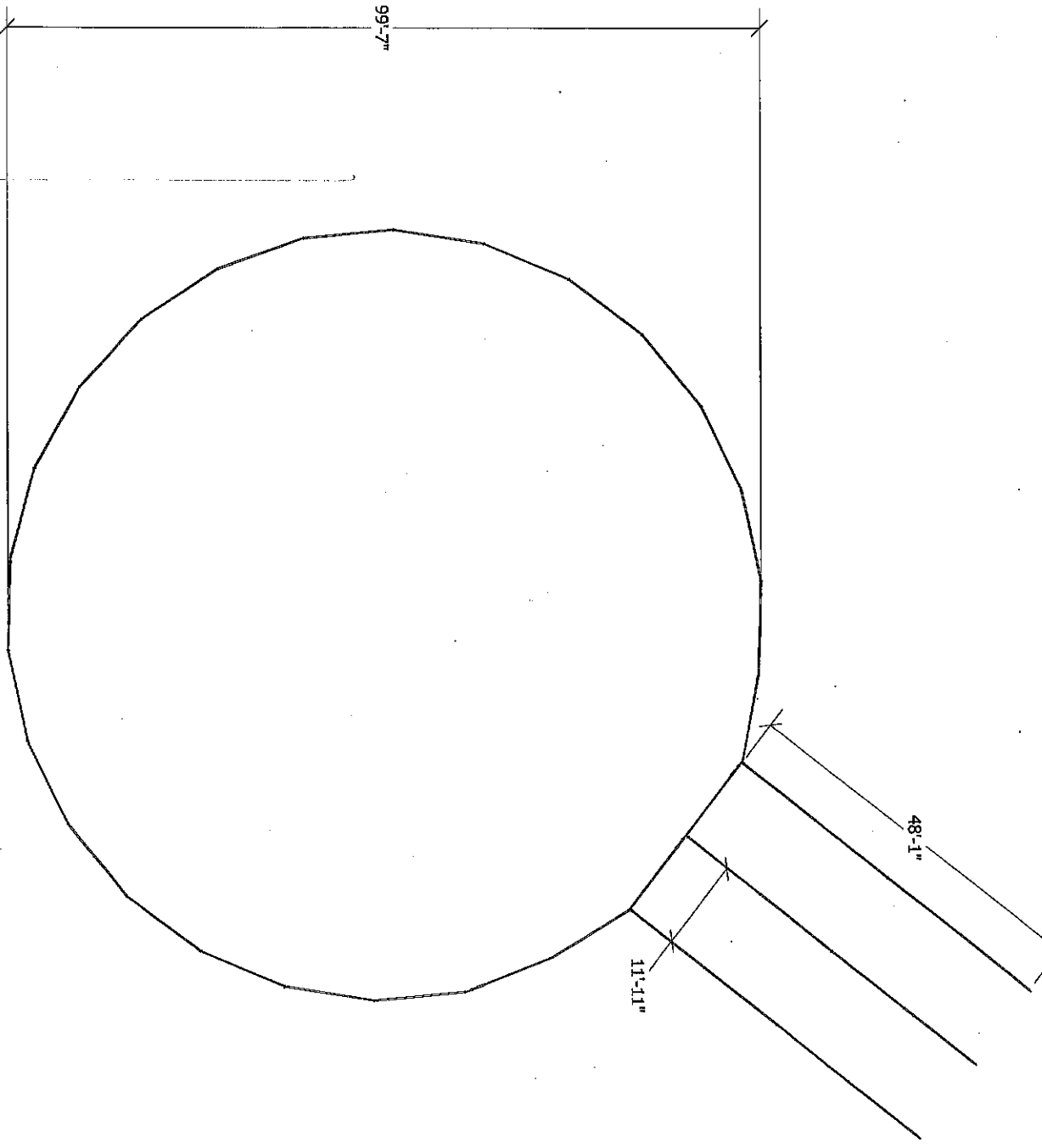
General discussion took place regarding the event with regards to the tourism and economic benefits this event would bring to the Town of Stettler.

Mayor Nolls thank Mr. Fischer for his excellent presentation and congratulated him and his committee for attracting the prestigious Canadian event to the Town of Stettler.

**Motion 22:03:11**

Moved by Councillor Lawlor that the Coast-to-Coast Vintage Car Tour – August 22-23, 2022 – Sponsorship Request be tabled to the next Committee of the Whole meeting.

MOTION CARRIED  
Unanimous

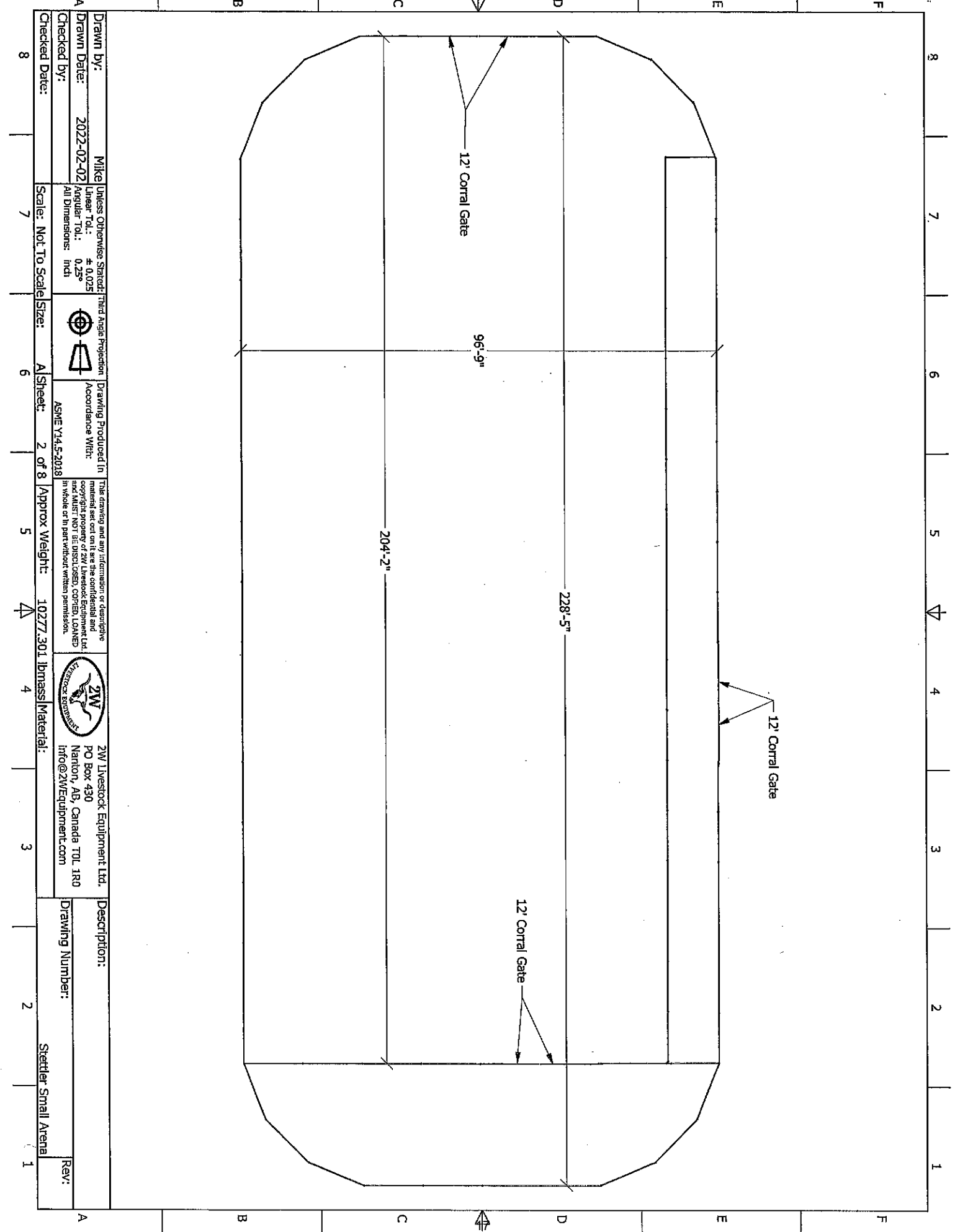


Drawn by:	MIKE	Unless Otherwise Stated:	Third Angle Projection	Drawing Produced in	This drawing and any information or descriptive material set out on it are the confidential and copyright property of 2W Livestock Equipment Ltd. In whole or in part without written permission.		2W Livestock Equipment Ltd. PO Box 430 Nanton, AB, Canada T0L 1R0 info@2WEquipment.com	Description:	
Drawn Date:	2022-02-02	Linear Tol.:	± 0.025	Conformance With:				Drawing Number:	Stettler Round Pen 100ft
Checked by:	All Dimensions:	Angular Tol.:	0.25°	ASME Y14.5-2018				Rev:	A
Checked Date:	8	Scale:	Not To Scale	Size:	A	Sheet:	1 of 8	Approx Weight:	5516.598 lb/mass

8 7 6 5 4 3 2 1

F E D C B A





Drawn by: MIKE  
 Drawn Date: 2022-02-02  
 Checked by:  
 Checked Date:

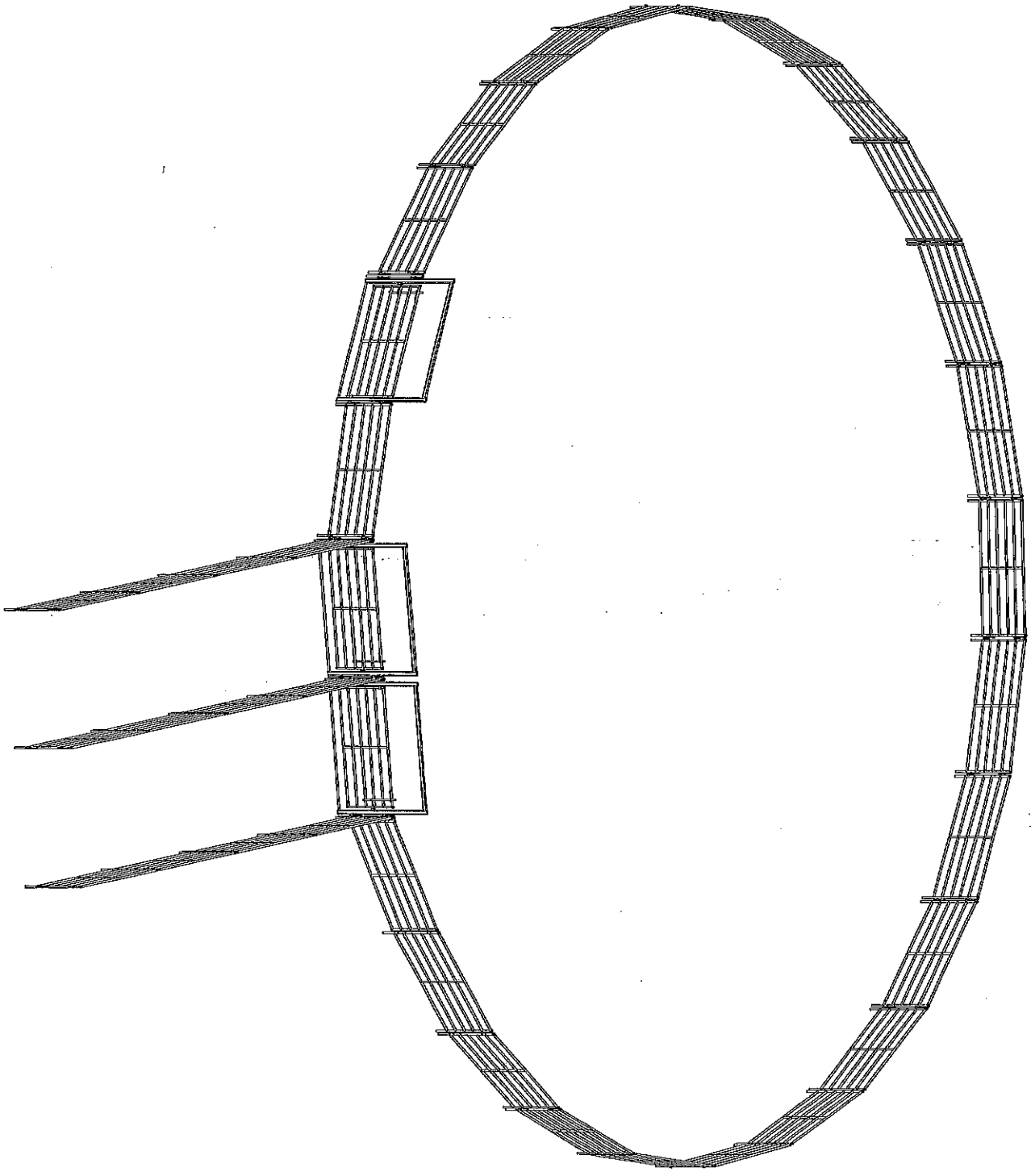
Unless Otherwise Stated: Third Angle Projection  
 Linear Tol.:  $\pm 0.025$   
 Angular Tol.:  $0.25^\circ$   
 All Dimensions: inch

Drawing Produced in Accordance With: ASME Y14.5-2018  
 This drawing and any information or descriptive material set out on it are the confidential and copyright property of 2W Livestock Equipment Ltd. and shall not be disclosed, copied, or used in whole or in part without written permission.

2W Livestock Equipment Ltd.  
 PO Box 430  
 Nanton, AB, Canada T0L 1R0  
 info@2WEquipment.com

Description:  
 Drawing Number: Stettler Small Arena  
 Rev: 1

Scale: Not To Scale  
 Size: A  
 Sheet: 2 of 8  
 Approx Weight: 10277.301 lbmass  
 Material:

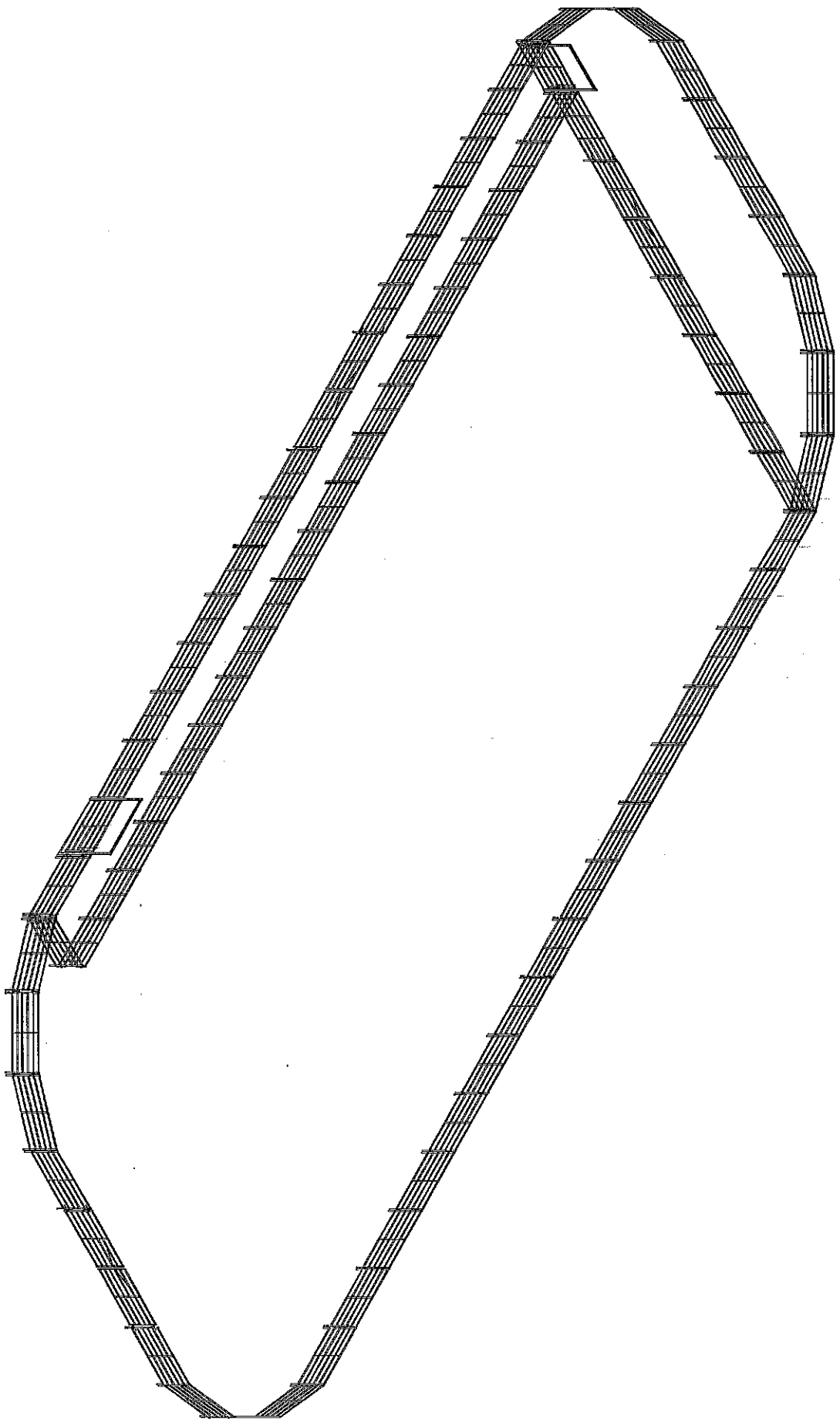


Drawn by: **Mike** | Unless Otherwise Stated: Third Angle Projection | Drawing Produced in Accordance With: **ASME Y14.5-2018** | This drawing and any information or descriptive material set out on it are the confidential and copyright property of 2W Livestock Equipment Ltd. and MUST NOT BE DISCLOSED, COPIED, LOANED or in whole or in part without written permission.

Drawn Date: **2022-02-02** | Linear Tol.:  $\pm 0.025$  | Angular Tol.:  $\pm 0.25^\circ$  | All Dimensions: **inch** | Drawing Number: **Stettler Round Pen 100FT** | Description: **Stettler Round Pen 100FT**

Checked by: **Mike** | Scale: **Not To Scale** | Sheet: **3 of 8** | Approx Weight: **5516.598 lbmass** | Material: **Steel** | Rev: **A**

Checked Date: **8** | 7 | 6 | 5 | 4 | 3 | 2 | 1



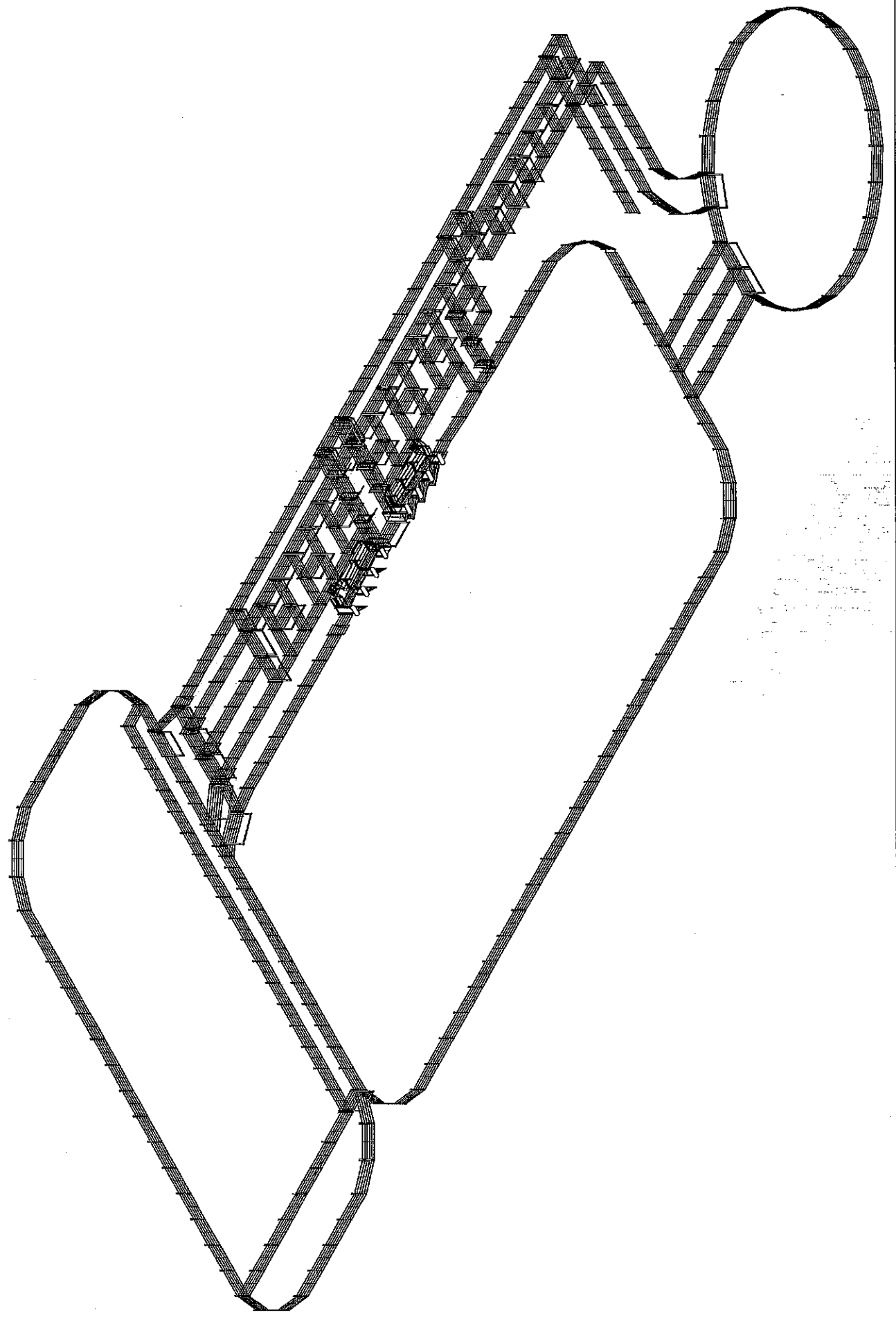
<p>Drawn by: Mike</p> <p>Drawn Date: 2022-02-02</p> <p>Checked by:</p> <p>Checked Date:</p>	<p>Unless Otherwise Stated:</p> <p>Linear Tol.: ± 0.025"</p> <p>Angular Tol.: 0.25°</p> <p>All Dimensions: Inch</p>	<p>Third Angle Projection</p>	<p>Drawing Produced In Accordance With:</p> <p>ASME Y14.5-2018</p>	<p>This drawing and any information or descriptive material contained on it is the confidential and proprietary information of 2W Livestock Equipment Ltd. and MUST NOT BE DISCLOSED, COPIED, LOANED or used in whole or in part without written permission.</p>	<p>2W Livestock Equipment Ltd. PO Box 430 Nanton, AB, Canada T0L 1R0 info@2WEquipment.com</p>	<p>Description:</p> <p>Drawing Number: Stettler Small Arena</p> <p>Rev:</p>
Scale: Not To Scale	Size: A	Sheet: 4 of 8	Approx Weight: 10277.301 lbmass	Material:		

8 7 6 5 4 3 2 1

F E D C B A

8 7 6 5 4 3 2 1

F E D C B A



Drawn by: Mike Unless Otherwise Stated: Third Angle Projection

Drawn Date: 2022-02-02 Linear Tol: ± 0.025 Drawing Produced In: ASME Y14.5-2018

Checked by: All Dimensions: Inch

Checked Date: 8 Scale: Not To Scale Size: A Sheet: 5 of 8 Approx Weight: 72406.459 lbmass Material:

Description:

Drawing Number: Shear Bucking Chutes 3L 3R + Back Pens

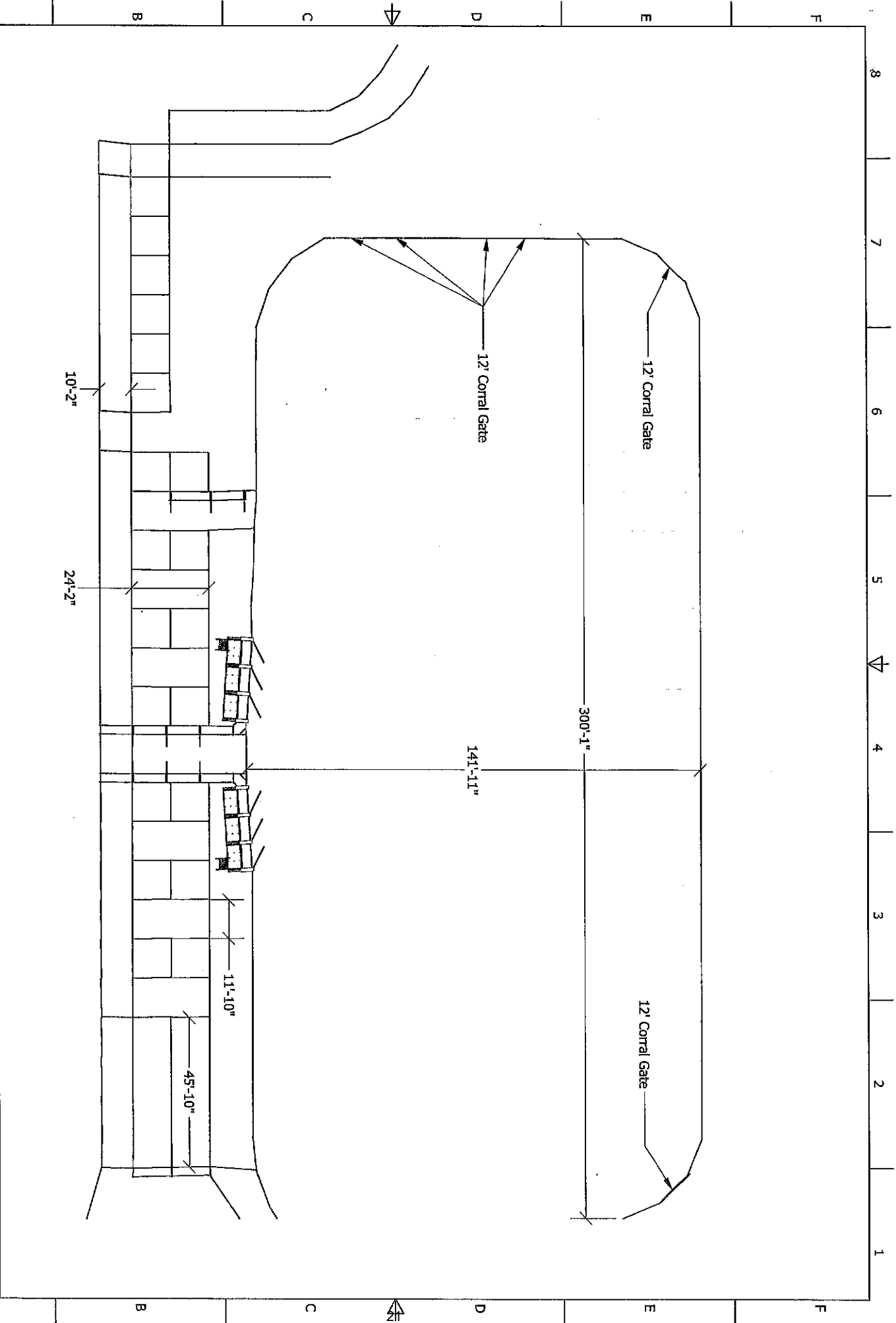
Rev: 1



2W Livestock Equipment Ltd.  
 PO Box 430  
 Nanton, AB, Canada T0L 1R0  
 Info@ZWEquipment.com

This drawing and any information or descriptive material set out on it are the confidential and copyright property of ZW Livestock Equipment Ltd. In whole or in part without written permission.

Linear Tol: ± 0.025  
 Angular Tol: 0.25°  
 All Dimensions: Inch



Drawn by: Mike  
 Drawn Date: 2022-02-02  
 Checked by: All Dimensions: Inch  
 Checked Date: 8-7-6-5-4-3-2-1

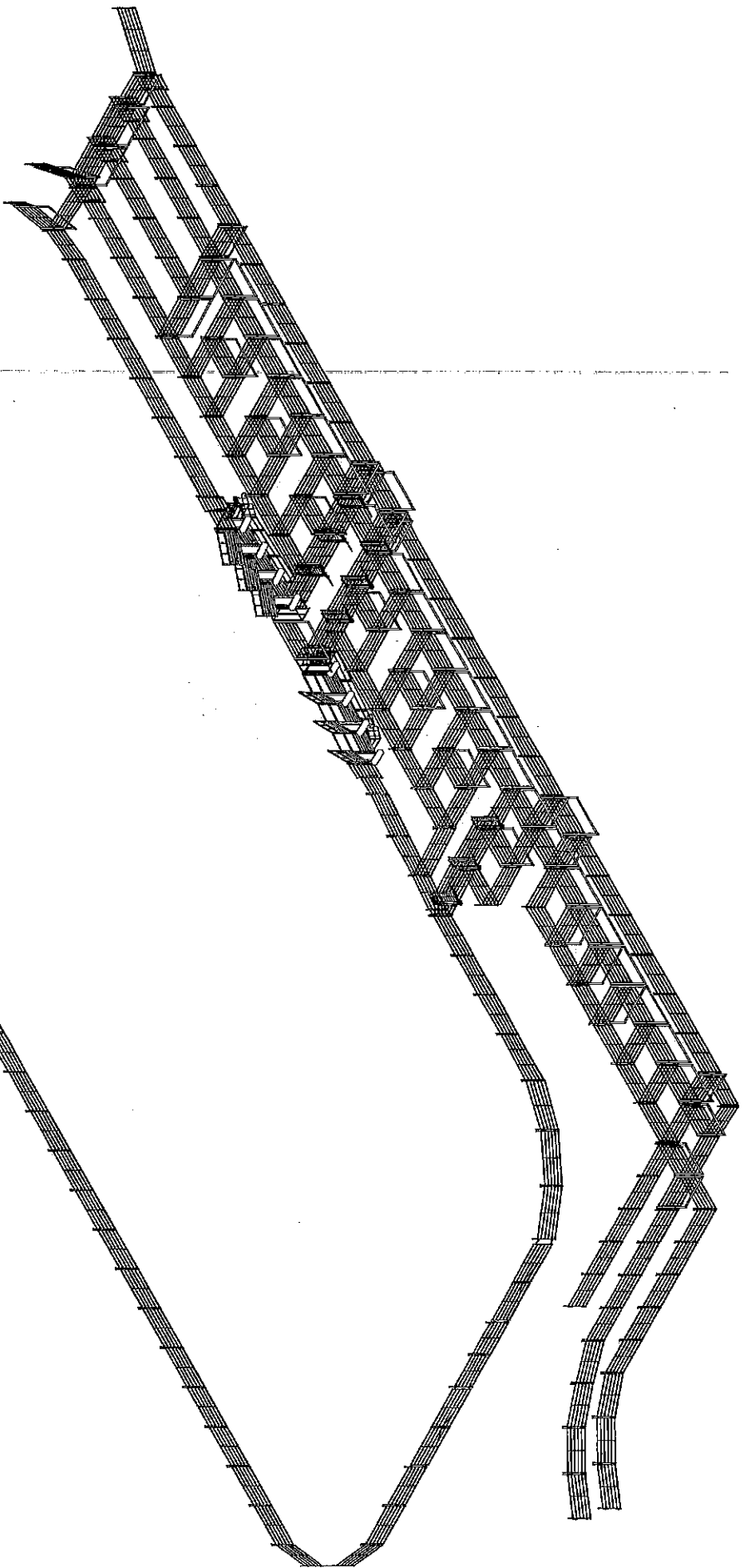
Unless Otherwise Stated: Third Angle Projection  
 Linear Tol.:  $\pm 0.025$   
 Angular Tol.:  $0.25^\circ$   
 All Dimensions: Inch

Drawing Produced in Accordance With: ASME Y14.5-2018  
 This drawing and any information or descriptive text is the property of 2W Livestock Equipment Ltd. and MUST NOT BE DISCLOSED, COPIED, LOANED or used in whole or in part without written permission.

2W Livestock Equipment Ltd.  
 PO Box 430  
 Nanton, AB, Canada T0L 1R0  
 info@2WEquipment.com

Description: Statter Bucking Chutes 3L 3R + Back Pens  
 Drawing Number:

Rev:



Drawn by: Mike  
 Drawn Date: 2022-02-02  
 Checked by:  
 Checked Date: 8

Unless Otherwise Stated:  
 Linear Tol:  $\pm 0.025$   
 Angular Tol:  $0.25^\circ$   
 All Dimensions: Inch

Third Angle Projection  
 Drawing Produced in Accordance With:  
 ASME Y14.5-2018

This drawing and any information or descriptive material set out on it are the confidential and proprietary information of 2W Livestock Equipment Ltd. and shall not be disclosed, copied, loaned or in whole or in part without written permission.

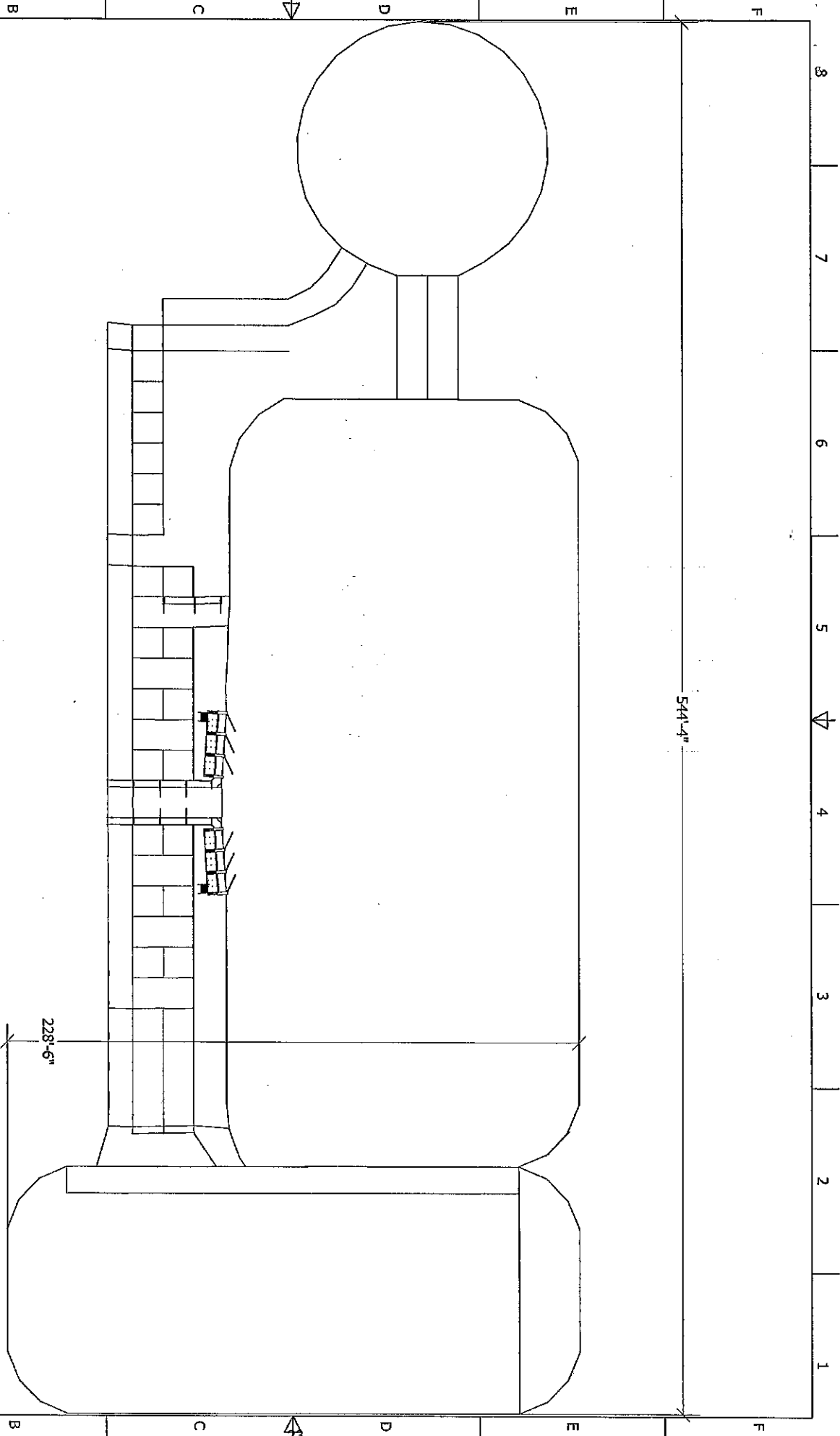
2W Livestock Equipment Ltd.  
 PO Box 430  
 Nanton, AB, Canada T0L 1R0  
 Info@2WEquipment.com

Description:  
 Drawing Number:  
 Stetter Bucking Chutes 31 3R + Back Pens

Rev:

8 7 6 5 4 3 2 1

A B C D E F



544'-4"

228'-6"

Drawn by: Mike  
 Drawn Date: 2022-02-02  
 Checked by:  
 Checked Date: 8

Unless Otherwise Stated: Third Angle Projection  
 Linear Tol: ± 0.025  
 Angular Tol: 0.25°  
 All Dimensions: Inch

Drawing Produced In Accordance With: ASME Y14.5-2018  
 This drawing and any information or descriptive material set out on it are the confidential and copyright property of 2W Livestock Equipment Ltd. and shall not be disclosed, copied, loaned, or made or in part without written permission.

Scale: Not To Scale  
 Size: A  
 Sheet: 8 of 8  
 Approx Weight: 72406.459 lbmass  
 Material:

2W Livestock Equipment Ltd.  
 PO Box 430  
 Nanton, AB, Canada T0L 1R0  
 info@2WEquipment.com

Description:  
 Drawing Number:  
 Rev:

Skidder Bucking Chutes 3L 3R + Back Pens

8 7 6 5 4 3 2 1

SHEET  
3D-A

DRAWING NUMBER  
10592B

DRAWING BY  
Ted Kyte

CUSTOMER  
Stettler Ag Society

LOCATION  
----

CREATION DATE  
2/21/2020 5:14:21 PM

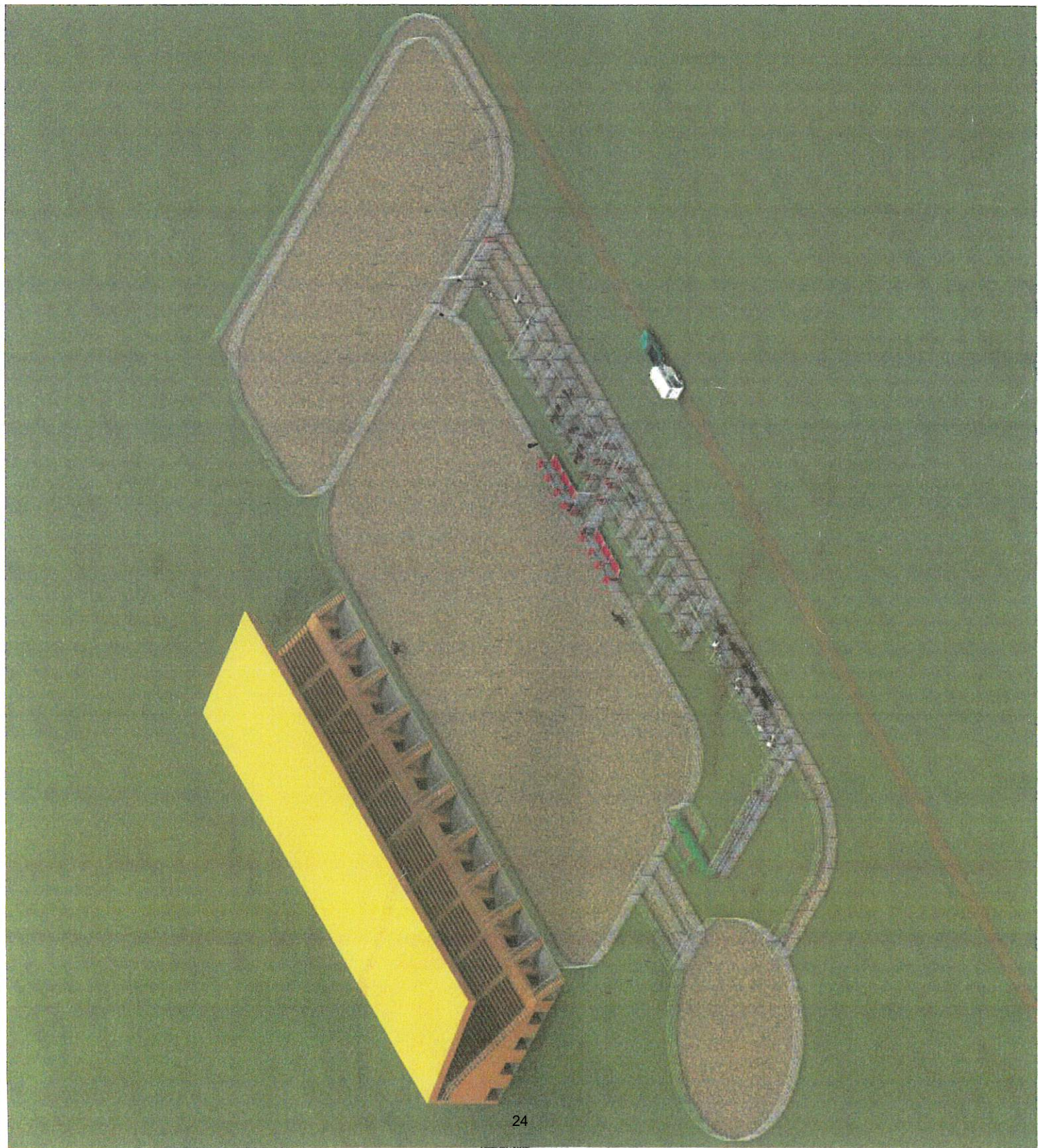
LAST REV DATE  
Feb 15 2020

# CORRAL DESIGNS .COM

P.O. Box 484  
Nanton Alberta  
Canada T0L1R0  
Phone 403-646-3281

Email:  
[info@corraldesigns.com](mailto:info@corraldesigns.com)

Helping People With  
Corral Designs  
For Over 25 Years  
Web Page  
[corraldesigns.com](http://corraldesigns.com)



author